

Always there to help you

Register your product and get support at
www.philips.com/welcome

SBM100



User Manual

PHILIPS

Contents

1	Important	3
----------	------------------	----------

2	Your Portable Speaker	4
	Introduction	4
	What's in the box	4
	Overview of the speaker	4

3	Get started	5
	Power supply	5
	Turn on/off	5
	Select a source	5

4	Play	6
	Play from Micro SD card	6
	Listen to FM radio	6
	Play from an external device	6
	Listen through the headphone	7
	Adjust volume	7

5	Product information	7
	Specifications	7

6	Troubleshooting	8
----------	------------------------	----------

7	Notice	8
----------	---------------	----------

1 Important

- Read these instructions.
- Follow all instructions.
- Do not use this apparatus near water.
- Do not block any ventilation openings. Install in accordance with the manufacturer's instructions.
- Do not install near any heat sources such as radiators, heat registers, stoves, or other apparatus (including amplifiers) that produce heat.
- Only use attachments/accessories specified by the manufacturer.
- Refer all servicing to qualified service personnel. Servicing is required when the apparatus has been damaged in any way, such as liquid has been spilled or objects have fallen into the apparatus, the apparatus has been exposed to rain or moisture, does not operate normally, or has been dropped.
- The battery shall not be exposed to excessive heat such as sunshine, fire or the like.
- Apparatus shall not be exposed to dripping or splashing.
- Do not place any sources of danger on the apparatus (e.g. liquid filled objects, lighted candles).

Hearing safety



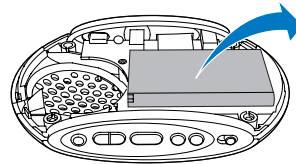
! Caution

- To prevent possible hearing damage, do not listen at high volume levels for long periods. Set the volume to a safe level. The louder the volume, the shorter is the safe listening time.

Be sure to observe the following guidelines when using your headphones.

- Listen at reasonable volumes for reasonable periods of time.
- Be careful not to adjust the volume continuously upwards as your hearing adapts.
- Do not turn up the volume so high that you can't hear what's around you.
- You should use caution or temporarily discontinue use in potentially hazardous situations.
- Excessive sound pressure from earphones and headphones can cause hearing loss.

Always bring your product to a professional to remove the built-in battery.



2 Your Portable Speaker

Congratulations on your purchase, and welcome to Philips! To fully benefit from the support that Philips offers, register your product at www.philips.com/welcome.

Introduction

With this speaker, you can:

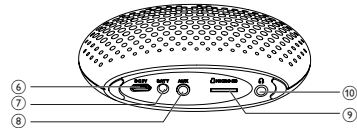
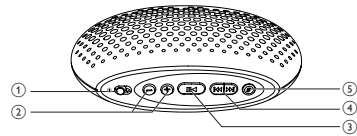
- listen to FM radio;
- enjoy audio from Micro SD card and other external devices.

What's in the box

Check and identify the contents of your package:

- Main unit
- USB cable X 1
- FM antenna X 1
- Quick start guide

Overview of the speaker



- ① **⏻**
 - Turn the portable speaker on or off.
- ② **-/+**
 - Adjust volume.
- ③ **▶||**
 - Start or pause play.
- ④ **◀◀ / ▶▶**
 - Select a track.
 - Search within play.
 - Tune to FM radio stations.
- ⑤ **S**
 - Select a source.
- ⑥ **DC 5V**
 - Recharge the built-in battery.
- ⑦ **BATT**
 - LED indicator.
- ⑧ **AUX**
 - Connect an external device.
- ⑨ **MICRO SD**
 - Micro SD card slot.
- ⑩ **🎧**
 - Headphone socket.

3 Get started

Always follow the instructions in this chapter in sequence.

If you contact Philips, you will be asked for the model and serial number of this apparatus. The model number and serial number are on the bottom of the apparatus. Write the numbers here:

Model No. _____

Serial No. _____

Power supply



Caution

- Danger of explosion if battery is incorrectly replaced. Replace only with the same or equivalent type.
- Risk of damage to the speaker. Do not charge through anything else other than the USB socket of a computer.

The speaker can operate on the built-in rechargeable battery.

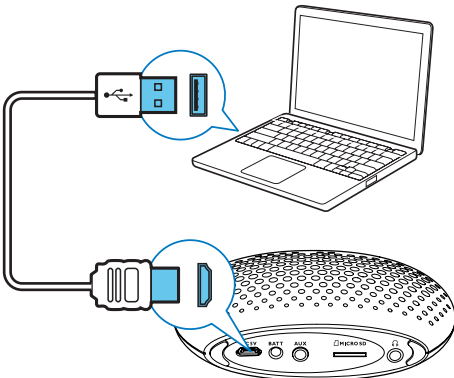
To recharge the built-in battery:

Connect the supplied USB cable to:

- the **DC 5V** socket on the speaker.
- the USB socket of a computer.

↳ The power indicator lights up.

↳ When the battery is fully charged, the power indicator turns off.



Turn on/off

- 1 Slide to right.
↳ The speaker switches to the last selected source.
- 2 To turn the speaker off, slide to left.

Select a source

Press **S** repeatedly to select an audio source: Micro SD card, FM tuner, or Aux.

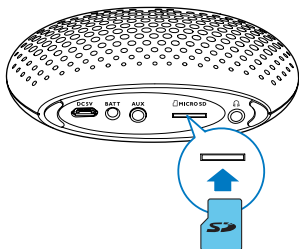
4 Play

Play from Micro SD card

Note

- Make sure that the Micro SD card contains playable audio content.

- 1 Press **S** repeatedly to select the Micro SD card source.
- 2 Insert a Micro SD card into the card slot.
↳ Play starts automatically.



- To pause or resume play, press **▶||**.
- To select an audio file, press **◀◀ / ▶▶**.
- To search during play, press and hold **◀◀ / ▶▶**, then release to resume normal play.

Note

- Due to different materials and product techniques, it cannot be guaranteed that all Micro SD cards will work with this speaker.

Listen to FM radio

Note

- Keep the portable speaker away from other electronic devices to avoid radio interference.

- 1 Press **S** repeatedly to select FM tuner source.
- 2 Press and hold **◀◀ / ▶▶** for two seconds.
↳ The speaker tunes to a station with strong reception automatically.
- 3 Repeat step 2 to tune to more radio stations.

To tune to a station manually:

Press **◀◀ / ▶▶** repeatedly until you find better reception.

Note


- If the signal of the radio station is weak, plug the supplied antenna into the **AUX** socket or listen through the headphone.

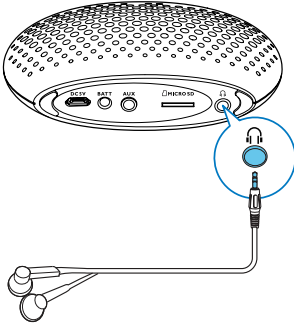
Play from an external device

With this speaker, you can also enjoy audio from an external device.

- 1 Connect an Aux-in cable (not supplied) to:
 - the **AUX** socket at the back of the speaker.
 - the headphone socket on an external device.
- 2 Play audio on the device (see the device's user manual).

Listen through the headphone

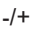
Plug a headphone into the  socket on the speaker:

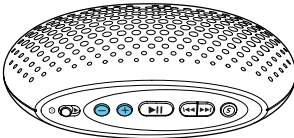


Tip

- When some headphones with Mic are plugged, you may hear audio from both the speaker and the headphone. If so, try another headphone.

Adjust volume

During play, press  to adjust volume.



5 Product information

Note

- Product information is subject to change without prior notice.

Specifications

Amplifier

Signal to Noise Ratio	>50 dB
Aux Input	600 mV RMS, 22 kohm

Tuner (FM)

Tuning Range	87.5-108.0 MHz
--------------	----------------

General information

Power supply	5 V \equiv 0.6 A;
Built-in battery	Lithium battery
Dimensions - Main Unit (W x H x D)	107 x 71 x 36 mm
Weight - Main Unit	0.1 kg

6 Troubleshooting

Warning

- Never remove the casing of this device.

To keep the warranty valid, never try to repair the system yourself.

If you encounter problems when using this device, check the following points before requesting service. If the problem remains unsolved, go to the Philips Web page (www.philips.com/support). When you contact Philips, make sure that the device is nearby and the model number and serial number are available.

No power

- Recharge the battery.

No sound

- Adjust volume.
- Check if you have selected the correct audio source.
- Disconnect the headphones.

No response from the speaker

- Turn on the speaker.
- Recharge the battery.

Poor radio reception

- Increase the distance between the unit and your TV or VCR.
- Fully extend the FM antenna.

7 Notice

Any changes or modifications made to this device that are not expressly approved by Philips Consumer Lifestyle may void the user's authority to operate the equipment.



This product complies with the radio interference requirements of the European Community.



Your product is designed and manufactured with high quality materials and components, which can be recycled and reused.



When this crossed-out wheeled bin symbol is attached to a product it means that the product is covered by the European Directive 2002/96/EC.

Please inform yourself about the local separate collection system for electrical and electronic products.

Please act according to your local rules and do not dispose of your old products with your normal household waste. Correct disposal of your old product helps to prevent potential negative consequences for the environment and human health.



Your product contains batteries covered by the European Directive 2006/66/EC, which cannot be disposed with normal household waste. Please inform yourself about the local rules on separate collection of batteries

because correct disposal helps to prevent negative consequences for the environmental and human health.

Environmental information

All unnecessary packaging has been omitted. We have tried to make the packaging easy to separate into three materials: cardboard (box), polystyrene foam (buffer) and polyethylene (bags, protective foam sheet.)

Your system consists of materials which can be recycled and reused if disassembled by a specialized company. Please observe the local regulations regarding the disposal of packaging materials, exhausted batteries and old equipment.



Note

- The type plate is located on the bottom of the apparatus.



Specifications are subject to change without notice
© 2012 Koninklijke Philips Electronics N.V.
All rights reserved.

SBM100_00_UM_V1.0

